

Beyond Imagination

Travel Guidebook

# IBARAKI





# Discover IBARAKI

Spectacular natural scenery, history and traditions, a food culture nurtured by the climate and surroundings. Ibaraki offers so much to see, feel, and savor—experiences that awaken all five senses, leaving lingering memories in the hearts of all who visit.

Each time you visit, the magnificent views that change from season to season will captivate you. This page: Hitachi Fudoki no Oka (see p. 30). Opposite page, top: Mt. Tsukuba (p. 8); bottom: Ryujin Big Suspension Bridge (p. 10).













Dynamic waterfalls, tranquil lakesides where wild birds flock, traditional crafts with an appealing diversity, distinctive craft beers created by a local sake brewery, and world-class branded Wagyu beef. All these experiences will leave a lasting impression in your heart.

Opposite page, top: Fukuroda Falls (p. 11); bottom: Lake Senba (p. 16)

This page, from top left: Kasama pottery (p. 13 and 16), Hitachino Nest Beer (p. 23 and 30, Kiuchi Brewery), Hitachi beef (p. 17 Teppanyaki Jin, Mito Plaza Hotel)



**1 Mt. Tsukuba**

Tsukuba, Tsukuba-shi



P.3 P.8

**2 JAXA Tsukuba Space Center**

2-1-1 Sengen, Tsukuba-shi



P.8

**3 Ushiku Daibutsu (Buddha)**

2083 Kuno-cho, Ushiku-shi



P.9

**4 Fukuroda Falls**

3-19 Fukuroda, Daigo-machi, Kuji-gun



P.4 P.11

**5 Ryujin Big Suspension Bridge**

2133-6 Kegano-cho, Hitachiota-shi



P.3 P.10

**6 Crafthills Kasama**

2388-1 Kasama, Kasama-shi



P.13

**7 Air Park Coo**

1698-1 Uwasa, Ishioka-shi



P.12

**8 Oarai Isosaki Jinja**

6890 Isohama-cho, Oarai-machi, Higashi-Ibaraki-gun



P.15

**9 Nakaminato Fish Market**

19-8 Minatohoncho, Hitachinaka-shi



P.14

**10 Kasama Inari Jinja**

1 Kasama, Kasama-shi



P.16

**11 Kodokan Mito Han School**

1-6-29 Sannomaru, Mito-shi



P.18

**12 Kairakuen Garden**

1 Tokiwa-cho, Mito-shi



P.18

**13 Hitachi Seaside Park**

605-4 Onuma, Mawatari, Hitachinaka-shi



P.19

**14 Yuki Kiraku-kai** *Yuki Information+*

Communication Center 1F South, 1-1-1 Kokubu-cho, Yuki-shi



P.20

**15 Granterrace Chikusei**

1850 Kawasumi, Chikusei-shi



P.21

**16 Kurosawa Shoyuten** (Kurosawa Soy Sauce Inc.)

1260 Mawatari, Hitachinaka-shi



P.22

**17 Kiuchi Brewery**

1257 Konosu, Naka-shi



P.5 P.23 P.30

**18 Meiri Shurui brewery** (Bessyun-kan sake museum)

327 Motoyoshida-cho, Mito-shi



P.22 P.30

**19 The Kashima Jingu Grand Shrine**

2306-1 Kyuchu, Kashima-shi



P.24

**20 Isoyamatei**

595 Itako, Itako-shi



P.25

**21 Lapoppo Namegata Farmers Village**

1561 Uzaki, Namegata-shi



P.25

**22 Ring-Ring Square Tsuchiura**

PLAYtré Tsuchiura 1F/B1F, 1-30 Ariake-cho, Tsuchiura-shi



P.26

**23 Kasumi Kitchen**

Kasumigaura-shi Koryu Center, 4784 Saka, Kasumigaura-shi



P.26

**24 Oiwa Jinja**

752 Irishiken-cho, Hitachi-shi



P.28

**25 Izura Rokkakudo**

727-2 Izura, Otsu-cho, Kita-Ibaraki-shi



P.28

**26 Tenshin Memorial Museum of Art, Ibaraki**

2083 Tsubaki, Otsu-cho, Kita-Ibaraki-shi



P.29

**ACCESS  
to  
IBARAKI**

Tokyo Station

JR Joban Line limited express  
about 1 hour 15 minutes

Narita Airport

Ibaraki Transport airport bus  
about 2 hours

Haneda Airport

Airport Limousine bus  
about 2 hours 15 minutes

Ibaraki Airport

Ibaraki Transport / Kanto Railway airport bus  
about 40 minutes

Mito Station



# Tsukuba Two-Day Route



## DAY 1

### Visit the citadel of a 3000-year-old faith

Climb the stone steps to **Tsukubasan Jinja** shrine, which worships Mt. Tsukuba as a deity. Since ancient times, travelers have come here before climbing the sacred mountain.

#### Map

1 Tsukuba, Tsukuba-shi  
[www.tsukubasanjinja.jp](http://www.tsukubasanjinja.jp)



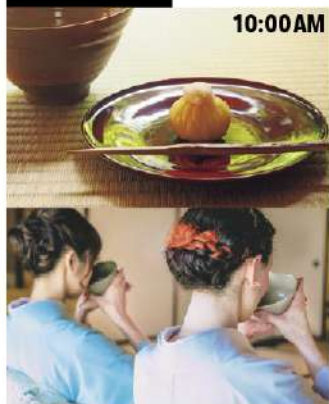
### Magnificent panorama of the Kanto Plain awaits

With its two peaks also accessible by cable car and ropeway, **Mt. Tsukuba** is an excellent hiking spot.

#### Map

Tsukuba, Tsukuba-shi  
<https://english.ibarakiguide.jp/mt-tsukuba.html>

## DAY 2



10:00 AM

### Encounter the heart of the Way of Tea

**Namichidori** Urasenke tea ceremony and kimono dressing school offers tea ceremony experience sessions by appointment. Popular Japanese-style sweets are also on offer at the adjoining tearoom.

Map  437-1 Onozaki, Tsukuba-shi

Sessions: 10 AM to 12 PM; tearoom: 10 AM to 5 PM

Open Wednesdays, Fridays, and Sundays <https://namichidori.info>



12:30 PM

JAXA

### Experience Japan's space exploration knowledge

At **Tsukuba Space Center**, get a close look at satellites, rocket engines, and a full-scale model of the Japanese Experiment Module of the International Space Station.

#### Map

2-1-1 Sengen, Tsukuba-shi

Space Dome pavilion: 10 AM to 4 PM

Closed irregularly; entry by reservation only

<https://fanfun.jaxa.jp/visit/tsukuba>





11:45 AM



2:00 PM



## Hearty meal options at a popular café

For a late lunch after your hike, try **Cafe Nisyouan's Mt. Tsukuba Burger**. You could also grill your own *senbei* rice crackers on a hibachi grill.

Map 

1221-3 Tsukuba, Tsukuba-shi

11 AM to 6 PM; from 10 AM weekends and holidays

Closed Fridays [www.nisyouan.com](http://www.nisyouan.com)

3:00 PM



## Relax and enjoy Mt. Tsukuba's hot springs

At **Tsukuba Grand Hotel** located halfway up Mt. Tsukuba, relax in the Open Air Sky Bath with panoramic views or the atmospheric Open Air Garden Bath.

Map 

1050-1 Tsukuba, Tsukuba-shi

Check-in from 3 PM, check-out by 10 AM

<https://tsukuba-grandhotel.co.jp>

Tsukuba

## TWO-DAY ROUTE PLAN

### DAY 1




### DAY 2




## More to See and Do



After climbing to the observation deck of the world's tallest standing bronze Buddha statue (120 meters), enjoy shopping and dining at an outlet mall.

Map  **Ushiku Daibutsu (Buddha)**  
2083 Kuno-cho, Ushiku-shi  
9:30 AM to 5 PM (to 5:30 PM weekends)  
Hours vary by season  
<https://daibutu.net>

Map  **Ami Premium Outlet**  
4-1-1 Yoshiwara, Ami-machi, Inashiki-gun  
10 AM to 8 PM (Restaurants and cafes vary)  
Closed the third Thursday in February  
[www.premiumoutlets.co.jp/en/ami](http://www.premiumoutlets.co.jp/en/ami)



# Daigo-Hitachiota

## Two-Day Route



### DAY 1

#### Taste a local specialty **II** for lunch

A great lunch option is *shamodon*, a rice bowl dish of local Okukuji *shamo* game fowl and egg. Restaurant **Yamaki** uses eggs collected the same morning.

#### Map **㊦**

741-1 Daigo, Daigo-machi, Kuji-gun  
11 AM to 3 PM, 5 PM to 8 PM  
Closed Wednesdays  
<http://daigo-yamaki.sakura.ne.jp>



#### Discover Daigo's special lacquerware **II**

The Daigo area has long been known for its high-quality lacquer production. Rustic and simple, **Kijian's** lacquerware is perfect for daily use and as a souvenir.

#### Map **㊦**

624 Daigo, Daigo-machi, Kuji-gun  
10 AM to 5 PM  
Open Saturdays, Sundays, and Mondays  
<https://kijian.thebase.in>



#### Take a break at a distinctive café **II**

**Daigo Cafe** operates in a converted, century-plus-old traditional Japanese house. The retro décor will make you feel like you have traveled back in time.

#### Map **㊦**

688 Daigo, Daigo-machi, Kuji-gun  
12 PM to 5 PM  
Closed Wednesdays  
<https://daigo-cafe.net/cafe/detail/daigo-cafe.html>

### DAY 2



#### Be thrilled by outdoor activities **II**

In the majestic nature of **Ryujin Lake**, explore the secluded beauty of the gorge, which can only be accessed from the water on a canoe, then dare the intense 100-meter bungee jump from the **Ryujin Big Suspension Bridge**.

#### Map **㊦** Canoe

2153-39 Shimotakakura-cho, Hitachiota-shi  
9:30 AM to 11:30 AM, 1:30 PM to 3:30 PM  
<https://storm.cx>

#### Map **㊦** Bungee jump

2133-6 Kegano-cho, Hitachiota-shi  
9 AM to 5 PM (Bridge open from 8:30 AM)  
<https://ohtsuribashi.ryujinkyo.jp>  
[www.bungey-japan.com/ryujin](http://www.bungey-japan.com/ryujin)

#### Map **㊦**

1395-4 Inagi-cho, Hitachiota-shi  
11 AM to 3 PM; closed Mondays (or Tuesdays if Monday is a holiday) and the fourth Tuesdays of the month  
[www.kanko-hitachiota.com/page/page000114.html](http://www.kanko-hitachiota.com/page/page000114.html)



#### Savor delightful **II** handmade soba noodles

The specialty of **Sova Tea Koshiji** is its limited *seiro* (cold soba noodles with dipping sauce). And be sure not to miss their popular desserts.







### A cascade abounding with seasonal beauty 🌿

The 120-meter high, 73-meter wide **Fukuroda Falls**, one of Japan's top three scenic waterfalls, offers spectacular views that showcase the four seasons' different charms.

#### Map ④

3-19 Fukuroda, Daigo-machi, Kuji-gun  
8 AM to 6 PM; 9 AM to 5 PM (November to April)  
<https://english.ibarakiguide.jp/kanko-spot/fukuroda-falls>

### Hot spring retreats surrounded by nature 🌿

About five minutes' walk from Fukuroda Falls, the **ryokan** inn **Honen Mansaku** is renowned for its cuisine featuring local ingredients and its open-air hot-spring baths.

#### Map ⑤ Honen Mansaku

169-3 Fukuroda, Daigo-machi, Kuji-gun  
Check-in from 3 PM to 6 PM  
Check-out by 10 AM  
[www.fukuroda.co.jp](http://www.fukuroda.co.jp)

#### Map ⑥ Omoide Romankan

978 Fukuroda, Daigo-machi, Kuji-gun  
Check-in from 3 PM to 6 PM  
Check-out by 10 AM  
[www.roman-kan.jp](http://www.roman-kan.jp)



The inn **Omoide Romankan** has both Japanese and Western style guest rooms. Ease your travel-weary body in the riverside hot-spring baths, with views of the Okukuji countryside.



### Explore a townscape lined with historic shop buildings 🏠

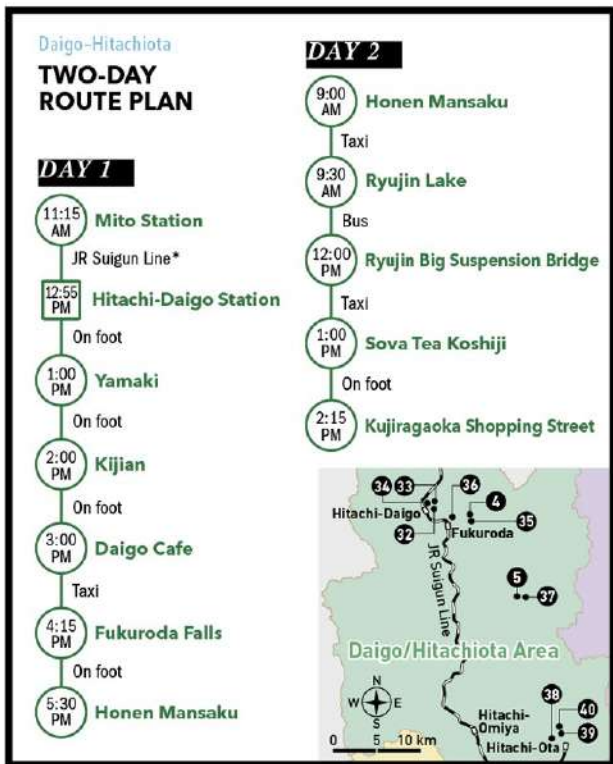
Kujiragaoka Shopping Street's many highlights include **Kujiraya**, famous for its whale-shaped Kujirayaki sweet, and **Sunny Sunday**, with its range of charming stationery and other fun goods.

#### Map ⑦ Kujiraya

2224 Higashi-ni-cho, Hitachiota-shi  
11 AM to 3 PM; closed Mondays, Wednesdays, Fridays, and Saturdays  
[www.kujiragaoka.com/shop/kujiraya](http://www.kujiragaoka.com/shop/kujiraya)

#### Map ⑧ Sunny Sunday

2295-2 Higashi-ichi-cho, Hitachiota-shi  
10 AM to 5 PM; closed Mondays and Thursdays  
[www.kujiragaoka.com/shop/sunny-sunday](http://www.kujiragaoka.com/shop/sunny-sunday)



\*Temporary bus service runs from Kamiogawa Station to Hitachi-Daigo Station as of July 2020.



# Kasama-Ishioka Two-Day Route



5:15 PM

## DAY 1

### A guesthouse stay, far from the city bustle

At **Mone House**, a guesthouse accommodating up to 13, stargaze at night, enjoy a moment by the woodstove, and next morning, prepare breakfast in the full kitchen to enjoy on the terrace.



**Auberge de Y** is a restaurant and guesthouse serving cuisine made with house-grown pesticide-free vegetables and other local ingredients. Stroll through the garden, or enjoy such activities as a harvest experience.

#### Map ⑥

707-1 Minami-Yoshiwara,  
Kasama-shi  
Restaurant meals and stays  
by reservation  
<http://kasama-y.com>



#### Map ①

2267-1 Fukuhara, Kasama-shi  
Check-in from 5 PM to 10 PM  
Check-out by 9 AM  
<https://minpaku-monenoie.amebaownd.com>

## DAY 2



9:00 AM



#### Map ⑦

1698-1 Uwaso, Ishioka-shi  
Half-day course 9 AM (weekends and holidays 9:30 AM) or 1 PM; one-day course 9 AM (weekends and holidays 9:30 AM) Closed Mondays and irregularly  
[www.airparkcoo.jp](http://www.airparkcoo.jp)

### Flavors of a great chestnut producing region

The highlight of a visit to third-generation chestnut grower **Shimaki Farm** is its rich chestnut soft-serve ice cream and exquisite chestnut jam, which makes the perfect souvenir (see page 30).

#### Map ④

1020-24 Kamitsuchida, Kasumigaura-shi  
9 AM to 5 PM; closed irregularly  
[www.ibaraki-shokusai.net/seisan/?id=574](http://www.ibaraki-shokusai.net/seisan/?id=574)



### Explore the mecca of air sports

Paragliding school **Air Park Coo** offers a range of courses, including half-day and full-day beginners' courses and tandem flights from 500 meters above sea level. Reservations are required.



## More to See and Do Pottery workshops

Kasama, the Kanto region's oldest pottery center, offers unique activities. At **Crafthills Kasama**, try your hand at the potter's wheel, then visit the café or museum on the premises. **Fukuda Kiln**, with a tradition of over 220 years, is a pioneer in pottery classes and is popular for its careful instruction.



**Map ④ Crafthills Kasama**  
2388-1 Kasama, Kasama-shi  
10 AM to 5 PM; closed Mondays  
(or Tuesdays if Monday is a holiday)  
[www.kasama-crafthills.co.jp](http://www.kasama-crafthills.co.jp)



**Map ⑤ Fukuda Kiln (Seitou Fukuda)**  
754 Shimoichige, Kasama-shi  
9 AM to 5 PM  
[www.seitou-fukuda.com](http://www.seitou-fukuda.com)



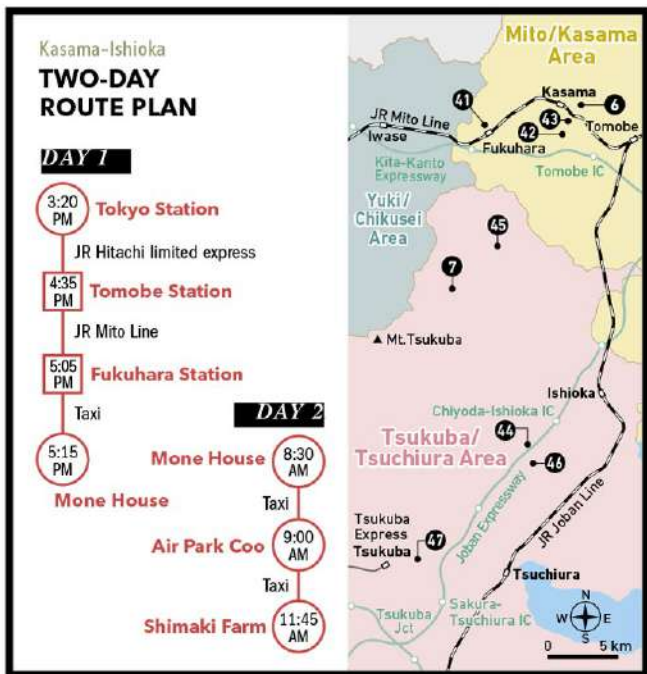
Ibaraki offers many unique fruit-picking opportunities in every season. Encounter new flavors every time you visit, from chestnuts to blueberries, nashi pears, grapes, and more.

**Map ⑥ Yasato Blueberry Farm**  
103-3 Nakado, Ishioka-shi  
Open mid-June to end of August  
9 AM to 5 PM  
Closed Mondays (or Tuesdays if Monday is a holiday)  
<http://yasatoblueberryfarm.com>

**Map ⑦ Chiyoda Engei**  
744-1 Nakasaya, Kasumigaura-shi  
Open mid-August to mid-October  
Hours and days open may be irregular  
[www.ibaraki-shokusai.net/shops3.php?mode=2&code=525](http://www.ibaraki-shokusai.net/shops3.php?mode=2&code=525)

**Map ⑧ Rural Kise (Fontaine no Mori)**  
1247-1 Kise, Tsukuba-shi  
Blueberry picking from 11 AM every Saturday, end of June to end of August  
Days open may be irregular  
Reservations recommended  
[www.fontaine-no-mori.com](http://www.fontaine-no-mori.com)

\*To find out more about Ibaraki's fruits, check the fruit calendar on page 18.





Enjoy the Seascape and Bounties

# Oarai-Hitachinaka

## To Do and Visit



Seek out the traditional flavors of the region **VI**

**Tsukinoi Brewery** ㊤, in Magarimatsu Shopping Street, 15 minutes' walk from Oarai Station on the Oarai-Kashima Line, has been brewing sake with consummate care for over 150 years (see page 30). As you stroll, snack on *mitsu-dango*, a local sweet of dumpling with syrup and toasted soybean flour, from **Aji no Mise Takahashi** ㊤. **Ume Cafe Wagon** ㊤, operated by Yoshidaya, a pickled *ume* plum specialty store established in 1830, is famous for its roll cake and other original ume dishes.



Bounties of the sea **VI**  
and of the land

Dine on wood-fired pizza, pasta, and many other seafood-packed dishes in the sea breeze on the terrace of **Trattoria Jmarina** ㊤ at Oarai Marina. Alternatively, for a Japanese option, try sushi and seafood rice bowls made with fresh seafood at one of the eateries at the popular tourist market, **Nakaminato Fish Market** ㊤. At **Daimaruya** ㊤, delight in choosing your favorite item from among the vast range of healthy *hoshi-imo* dried sweet potato products on offer (see page 30).





STAY  
&  
VISIT



A seaside holiday,  
with spectacular views all to yourself  

The highlight of a trip to Oarai is the luxury of a stay in accommodations where all rooms have ocean views. From **Oarai Hotel Annex Gyorai-an** , you can see the Kamiiso no Torii (**Oarai Isosaki Jinja**) , the shrine gate that stands in the sea. Watch the sunrise, then walk in the fresh air to visit the main shrine. Another option is **Satoumitai** , an

eight-room inn where the warmth of its woody décor gives the feel of a vacation home by the sea. A short journey away is **Sakatsura Isosaki Jinja** , the "brother" shrine of Oarai Isosaki Jinja. This ancient shrine was founded in 856 and has long been the site of worship for locals who pray for safety at sea, abundant catches, and good sake brewing.

**Map 55** Tsukinoi Brewery  
638 Isohama-cho, Oarai-machi,  
Higashi-Ibaraki-gun  
9 AM to 5 PM; closed irregularly  
<https://tsukinoi.co.jp>

**Map 53** Aji no Mise Takahashi  
884 Isohama-cho, Oarai-machi,  
Higashi-Ibaraki-gun  
10 AM to 6 PM  
Closed Tuesdays and the first  
Wednesdays of the month  
[www.oarai-info.jp/page/page000061.html](http://www.oarai-info.jp/page/page000061.html)

**Map 54** Ume Cafe Waon  
546 Isohama-cho, Oarai-machi,  
Higashi-Ibaraki-gun  
10 AM to 6 PM  
Closed Wednesdays and  
irregularly  
<http://kk-yoshidaya.co.jp/umecafe>

**Map 51** Trattoria Jmarina  
12-5 Minato-Chuo, Oarai-machi,

**Higashi-Ibaraki-gun**  
Hours and days closed may  
be irregular  
[www.oarai-port.com/marina/restaurant/index.html](http://www.oarai-port.com/marina/restaurant/index.html)

**Map 49** Nakaminato Fish Market  
19-8 Minatohoncho,  
Hitachinaka-shi  
Open hours and days vary by  
stall and restaurant; all shops  
open weekends and holidays  
<https://english.ibarakiguide.jp/kanko-spot/nakaminato-fish-market>

**Map 52** Daimaruya  
18-38 Shaka-machi,  
Hitachinaka-shi  
10 AM to 5 PM; 9 AM to 5:30 PM  
Sundays and holidays  
[www.e-daimaruya.co.jp](http://www.e-daimaruya.co.jp)

**Map 50** Gyorai-an  
6885 Isohama-cho,

**Oarai-machi,**  
Higashi-Ibaraki-gun  
Check-in from 3 PM  
Check-out by 10 AM  
[www.hotel-gyoraian.jp](http://www.hotel-gyoraian.jp)

**Map 8** Oarai Isosaki Jinja  
6890 Isohama-cho,  
Oarai-machi,  
Higashi-Ibaraki-gun  
<http://oarai-isosakijinja.or.jp>

**Map 53** Satoumitai  
6883 Isohama-cho,  
Oarai-machi,  
Higashi-Ibaraki-gun  
Check-in from 3 to 5:30 PM  
Check-out by 11:30 AM  
[www.satoumitai.jp](http://www.satoumitai.jp)

**Map 56** Sakatsura Isosaki Jinja  
4607-2 Isozaki-cho,  
Hitachinaka-shi  
<https://sakatsura.org>





Discover the Legacy of History

# Mito-Kasama Two-Day Route

Map ⑤ Kairo Gallery Mon  
2230-1 Kasama, Kasama-shi  
10 AM to 5 PM  
[www.gallery-mon.co.jp](http://www.gallery-mon.co.jp)

Map ⑥ Kilala-kan  
2258-1 Kasama, Kasama-shi  
10 AM to 5 PM  
<https://kilalakan.jp>



2:05 PM



1:00 PM

Start your walk from a historic town landmark

**Kasama Inari Jinja** shrine, one of Japan's top three Inari shrines, hosts the Kasama Chrysanthemum Festival in autumn. In early May, the 400-year-old wisteria trees reach full bloom.

Map ⑩  
1 Kasama, Kasama-shi  
[www.kasama.or.jp/english/index.html](http://www.kasama.or.jp/english/index.html)

Stroll the gallery road of a pottery town

Discover the charms of Kasama pottery at **Kairo Gallery Mon**, where one-of-a-kind artist pieces are displayed in the corridor gallery around its courtyard, and **Kilala-kan** ceramics center, with an abundant range of wares for sale.

DAY 1

DAY 2



10:45 AM

Home to the spirit of Japan's modern education

**Kodokan** was an academic and martial arts school founded by the Mito domain in 1841. The Important Cultural Property building retains a dignified aura.

Map ①  
1-6-29 Sannomaru, Mito-shi  
9 AM to 5 PM (Feb. 20 to Sept. 30)  
9 AM to 4:30 PM (Oct. 1 to Feb. 19)  
[https://ibarakiguide.jp/park/foreign\\_language/en/kodokan/index.html](https://ibarakiguide.jp/park/foreign_language/en/kodokan/index.html)



11:30 AM

Scenic seasonal beauty enriched by history

Whereas Kodokan was a place to learn and train, **Kairakuen** was created to rest the mind and body. It boasts majestic scenery and magnificent plum blossoms.

Map ⑫  
1 Tokiwa-cho, Mito-shi  
6 AM to 7 PM (Feb. 20 to Sept. 30)  
7 AM to 6 PM (Oct. 1 to Feb. 19)  
[https://ibarakiguide.jp/park/foreign\\_language/en/kairakuen/index.html](https://ibarakiguide.jp/park/foreign_language/en/kairakuen/index.html)

Spend an afternoon of lakeside relaxation

**Lake Senba**, an oasis in the city of Mito, is home to wild birds including swans. Enjoy refreshing house-made lemonade at the lakeside **Kobun Cafe**.



12:30 PM

Washoku traditions with a western touch

At **Tousuian**, enjoy modern *kaiseki* Japanese cuisine for a colorful nouvelle lunchtime feast, paired with wines selected by the owner-sommelier.

Map ⑬  
2755-1 Senba-cho, Mito-shi  
11:30 AM to 3 PM, 5:30 PM to 10 PM  
[www.tousuian.com](http://www.tousuian.com)



1:45 PM



3:15 PM

### Petits gâteaux packed with Ibaraki fruits

A stone's throw from Kasama Station, popular patisserie **Gruyères** has many regular customers who travel long distances for its many and varied cakes and desserts.

Map 6  
285 Shimoichige, Kasama-shi  
9 AM to 7 PM  
<http://kasamagashi.com>



4:45 PM

### Luxurious stay in the heart of Mito

**Mito Plaza Hotel** welcomes guests with its sophisticated appointments and a relaxing atmosphere full of greenery. Savor Hitachi beef at restaurant **Teppanyaki Jin** (see page 5).

Map 6  
2078-1 Senba-cho, Mito-shi  
Check-in from 3 PM, check-out by 11 AM  
[www.mito-plaza.jp](http://www.mito-plaza.jp)



6:30 PM

### Be intoxicated by izakaya tavern culture

To experience Mito's night life, head for **Miyashita Ginza**, a retro shopping arcade beyond a red torii gate, where eateries serve Japanese, Western, and Chinese cuisine.

Map 6  
5 minutes on foot from JR Mito Station  
Open hours and days vary by shop  
<https://miyagin.fun>



2:00 PM

Map 6 Kobun Cafe  
Located lakeside  
10 AM to 6 PM  
<http://koubuncafe.com>

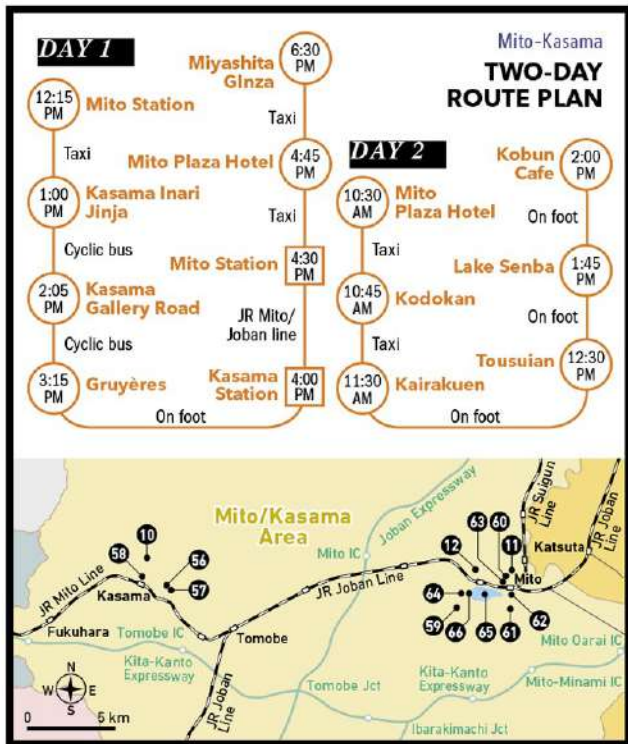
Map 6 Lake Senba  
3080 Senba-cho, Mito-shi  
<https://english.ibarakiguide.jp/kanko-spot/lake-senba>

### More fine accommodations in Mito

Map 6 Mito Keisei Hotel  
1-4-73 Sannomaru, Mito-shi  
Check-in from 3 PM, check-out by 11 AM  
[www.mito-keiseihotel.com](http://www.mito-keiseihotel.com)

Map 6 President Hotel Mito  
2-2-2 Jonan, Mito-shi  
Check-in from 2 PM, check-out by 11 AM  
[www.president-hotel-mito.co.jp](http://www.president-hotel-mito.co.jp)

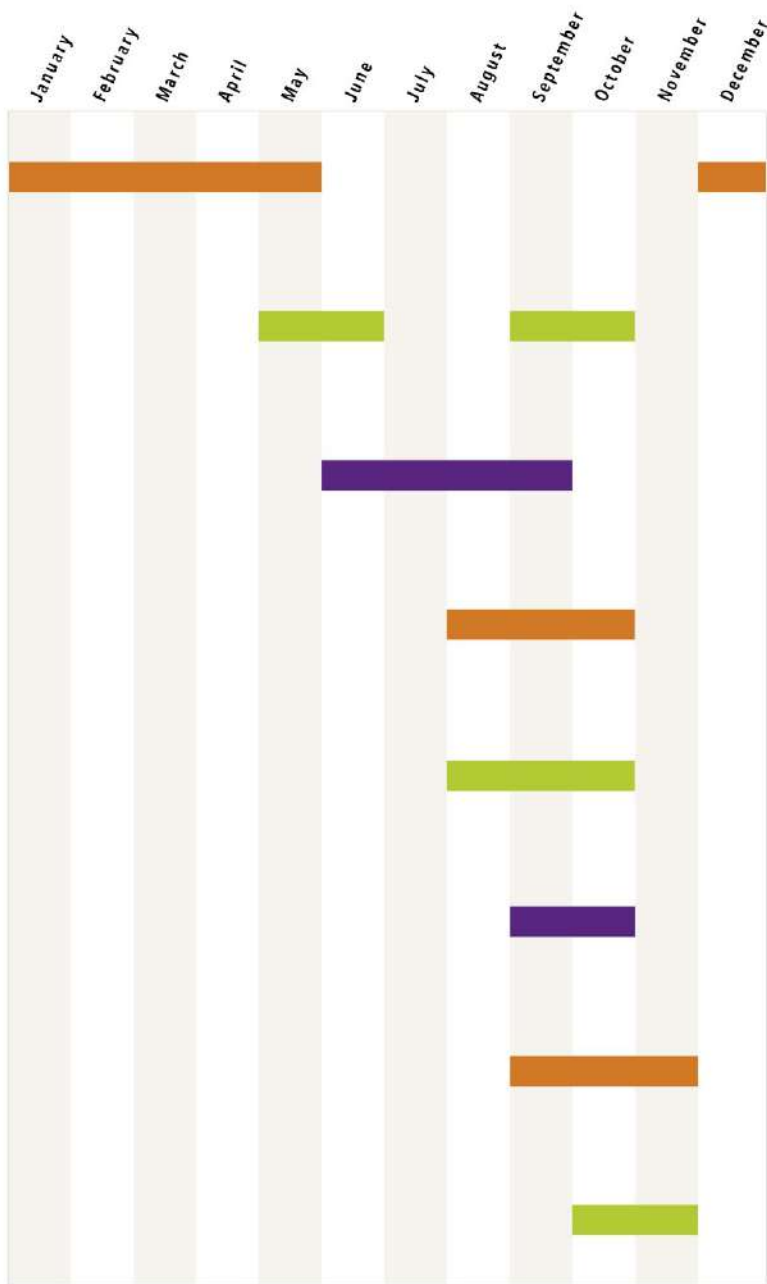
Map 6 Hotel Terrace the Garden Mito  
1-7-20 Miya-machi, Mito-shi  
Check-in from 3 PM, check-out by 11 AM  
[www.hotel-terrace.com](http://www.hotel-terrace.com)





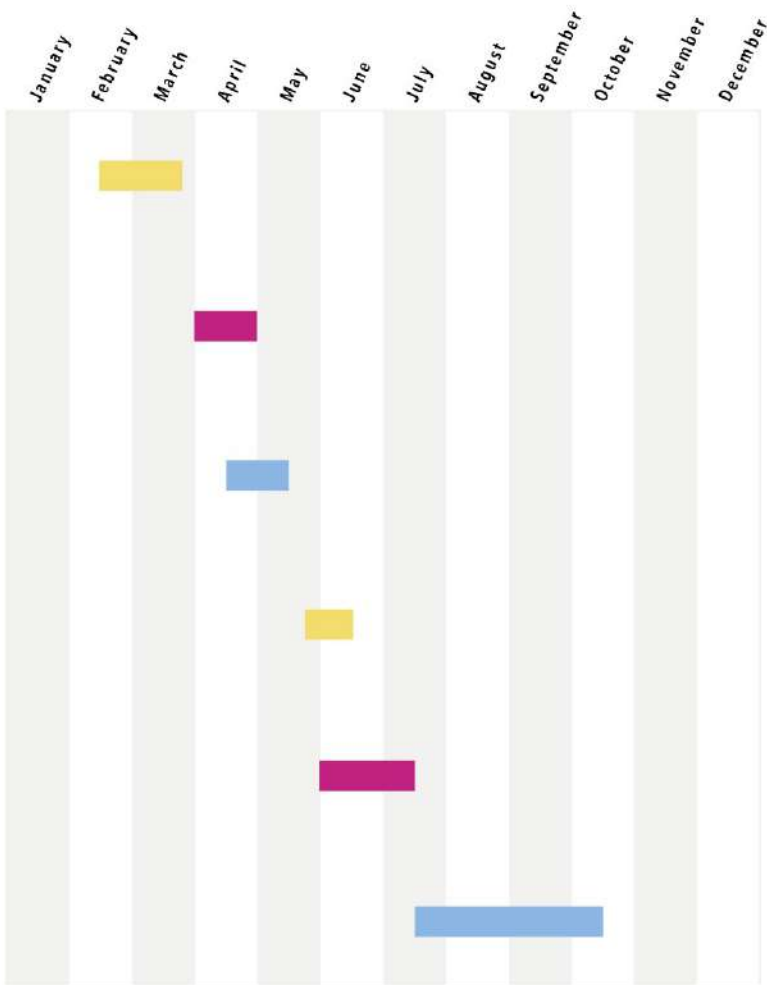
# IBARAKI Fruit Calendar

Ibaraki's remarkable agricultural industry is blessed by rich soil and a moderate climate. This famous fruit-producing region boasts Japan's largest production volumes and cultivation areas for melons and chestnuts. In recent years, original varieties such as "Ibarakiss" strawberries have become popular.



# IBARAKI Flower Calendar

Exploring famous flower spots is another enjoyable feature of a trip to Ibaraki. Scenes of various blooms adorning the countryside throughout the seasons offer a fleeting beauty that changes with the passage of time.



## More to See and Do Hitachi Seaside Park

A variety of flowers bloom in profusion across **Hitachi Seaside Park's** 350-hectare expanse. Hills that are awash with nemophila blue in spring

transform into a sea of green in the summer, before the cute and fluffy kochia turn a bright scarlet in autumn.



**Map**  
605-4 Onuma, Mawatari,  
Hitachinaka-shi  
9:30 AM to 5 PM  
Closed Tuesdays  
(or the next weekday if  
Tuesday is a holiday)  
Hours and days closed vary  
by season  
<https://hitachikaihin.jp/en>



# Yuki-Chikusei

## To Do and Visit

Feel the    
comfortable luxury  
of Yuki-tsumugi

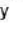
Yuki is the birthplace of Yuki-tsumugi, one of Japan's oldest luxury textiles, woven from hand-spun silk. It has been designated an Intangible Cultural Heritage by UNESCO. With **Yuki Kiraku-kai's**  dressing and rental service, you can stroll the streets of Yuki lined with historical buildings in your kimono attire. After all that walking, take a break at **Kissa Kajinoki** , a café in a converted 140-year-old *misegura* shop building.



### EXPERIENCE



### Try Japan's traditional martial art

Amid the greenery of **Yamato Horse Park** , go for a horse ride or try *yabusame*, the art of hitting a target with an arrow from a galloping horse. Anyone with horse-riding experience can participate.





68



## Choose from three different world cuisines

**Natural Sense Inose's** three chefs each specialize in Japanese, Western, or Chinese cuisine. The extensive menu ranges from soba noodles to pasta to ramen.

69



SAVOR



15



## Gourmet delights at a roadside station

At Northern Kanto region's largest roadside station, **Granterrace Chikusei**, buy fresh-picked produce from the farmer's stands or shop for souvenirs, and enjoy casual gourmet favorites such as the local specialty, Shimodate Ramen.

**Map 14** Yuki Kiraku-kai  
Yuki Information + Communication Center 1F South,  
1-1-1 Kokubu-cho, Yuki-shi  
10 AM to 3 PM  
Closed Mondays (or Tuesdays if Monday is a holiday)  
Reservations required for rental  
[www.city.yuki.lg.jp/page/page002749.html](http://www.city.yuki.lg.jp/page/page002749.html)

**Map 15** Kissa Kajinoki  
397 Yuki, Yuki-shi  
11 AM to 6 PM  
9 AM to 6 PM Saturdays; to 5 PM Sundays  
Closed Mondays (or Tuesdays if Monday is a holiday)  
[www.facebook.com/kajinoki397](http://www.facebook.com/kajinoki397)

**Map 16** Yamato Horse Park  
4432-6 Okunitama,  
Sakuragawa-shi

9 AM to 4 PM; 6 AM to 7 PM (July to September)  
Closed Mondays (or Tuesdays if Monday is a holiday)  
<https://yamatohorsepark.com>

**Map 17** Natural Sense Inose  
125 Isayama, Chikusei-shi  
11 AM to 2 PM  
5:30 PM to 9 PM  
Closed irregularly  
[www.facebook.com/naturarusenseinose](http://www.facebook.com/naturarusenseinose)

**Map 18** Granterrace Chikusei  
1850 Kawasumi, Chikusei-shi  
9 AM to 6 PM; to 7 PM (June to August)  
Closed the 3rd Wednesdays of every month  
<https://granterrace-chikusei.com>





Discover and Savor Brewing Traditions

# Hitachinaka-Naka-Mito

## One-Day Route

### A seasoning indispensable to Washoku culture

Ibaraki has long been a famed soy sauce-producing region. **Kurosawa Shoyuten**, founded in 1905, brews soy sauce using traditional methods. In the shop housed in its converted storehouse, a new café is due to open in spring 2021. With reservations you can tour the preparation process that begins in January.



2:15 PM

### Fine sake redolent with plums

**Meiri Shurui** brewery is famous for its best-in-Japan award-winning *umeshu* plum wine. After viewing the display of old sake-brewing tools in the Bessyun-kan museum and the umeshu storehouse, sample the variety that line the shop shelves to discover your favorite.

#### Map

327 Motoyoshida-cho, Mito-shi

9:30 AM to 4:30 PM

Closed Mondays

(or Tuesdays if Monday is a holiday)

Open everyday February and March

Groups require advance reservation

<http://bessyun-kan.jp>



3:30 PM

### Choosing souvenirs: another fun journey

For souvenir shopping before your return train, head for Ibaraki Ajiwai-ichi on the third floor of **Excel Minami** in Mito Station. You will find the prefecture's prized products on offer, including *natto* (fermented soybeans), plum products, sweets and seafood products.

#### Map

Mito Station building Excel Minami 3F,

1-7-31 Miya-machi, Mito-shi

10 AM to 8:30 PM

[www.excel-mito.com](http://www.excel-mito.com)



10:35 AM



## Lunch that only a brewer could offer

For over 190 years, **Kiuchi Brewery** has produced original *junmai* sake while pursuing a new vision for the brewery, releasing popular *shochu* liquor, wine, and craft beer (see pages 5 and 30). Stop by to savor the signature hand-made soba noodles at the restaurant, Nakaya.



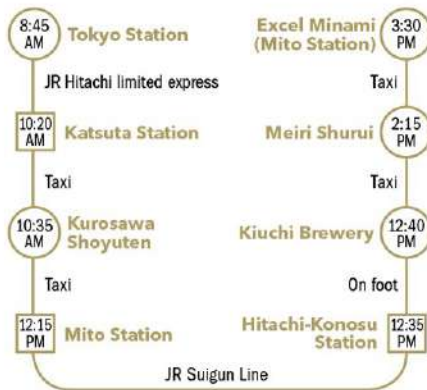
**Map 17**  
1257 Konosu, Naka-shi  
10 AM to 6:30 PM  
Restaurant: 11:30 AM to 2:30 PM,  
5:30 PM to 8 PM (weekends and  
holidays only)  
Closed Thursdays  
<http://kodawari.cc>



**Map 18**  
1260 Mawatari, Hitachinaka-shi  
9 AM to 6 PM  
Closed Sundays  
[www.fujini-shouyu.co.jp](http://www.fujini-shouyu.co.jp)



## Hitachinaka-Naka-Mito ONE-DAY ROUTE PLAN





Soothing Greenery and Waterside

# Kashima-Itako One-Day Route



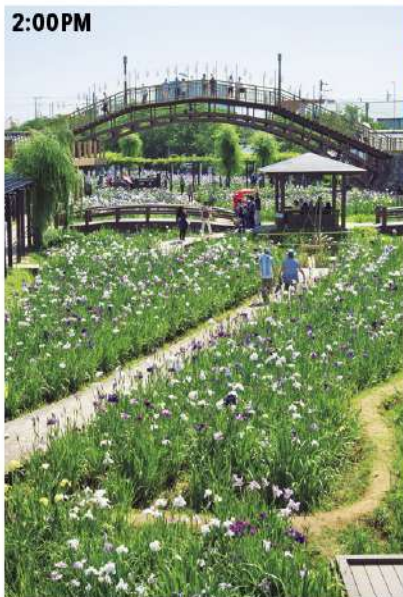
Map ①  
2306-1 Kyuchu, Kashima-shi  
<http://kashimajingu.jp>



10:00 AM

Recharge your  spirits in a verdant sanctuary

The **Kashima Jingu Grand Shrine** is thought to have been founded in 660 BCE. Bask in nature's energy by the 1,300-year-old sacred tree, the crystal-clear spring water of Mitarashi Pond, and many other spots.



2:00PM



Revel in the   waterside atmosphere

Around June 10, **Suigo Itako Iris Garden** comes alive with a million iris plants of 500 different varieties in full bloom. The Suigo Itako Iris Festival (late May to late June) features fun attractions including *kasuri-weave* costume dress-ups, while pleasure boat rides can be enjoyed year-round. Stroll through the riverside town, then take a Japanese-style tea break at **Isoyamatel**, a traditional house that retains an aura of the Meiji (1868–1912) period.



Map ② Suigo Itako Iris Garden  
1-5 Ayame, Itako-shi  
[www.city.itako.lg.jp/page/page001385.html](http://www.city.itako.lg.jp/page/page001385.html)

12:00PM



## Authentic Japanese cuisine for lunch

About 20 minutes' drive from The Kashima Jingu Grand Shrine, **Kashima Central Hotel's** Japanese Restaurant Maki offers an extensive menu, ranging from casual rice bowls topped with select seasonal ingredients to more sumptuous course options.



**Map ①**  
4-7-11 Onohara, Kamisu-shi  
11:30 AM to 2 PM  
5 PM to 8:30 PM  
[www.ekch.jp](http://www.ekch.jp)

## More to See and Do Lapoppo Namegata Farmers Village

Famous for sweet potato-digging in autumn, this location is also a popular "glamping" spot. Stay in shipping-container-turned-lodges and tents erected among the vast natural surrounds, pick fresh vegetables from the fields right outside, and enjoy a barbecue.



**Map ②**  
1561 Uzaki, Namegata-shi  
Hours and days closed may be irregular  
<http://farmglamping.namegata-tv.jp>



**Map ③** Isoyamatei  
595 Itako, Itako-shi  
10 AM to 4 PM  
Closed Mondays (or Tuesdays if Monday is a holiday),  
or if there are guests staying in the lodging facility  
<https://itako-isoyamatei.com>



## Kashima-Itako ONE-DAY ROUTE PLAN





# A Must-Visit Cycling Road

## Tsuchiura-Kasumigaura

### One-Day Route



9:00 AM

le.cyc

#### Go on a casual cycling excursion



At Tsuchiura Station, about 50 minutes by train from Tokyo, rent a bicycle from **Ring-Ring Square Tsuchiura**, a cycling hub facility directly connected to the station. Then set off on the 90-kilometer Mini Circuit Course around Lake Kasumigaura!

**Map 22** PLAYatré Tsuchiura 1F/B1F, 1-30 Aniake-cho, Tsuchiura-shi; 1F: 10 AM to 8 PM; B1F: 5 AM to 1 AM; reservations required for rental [www.ringringroad.com/square](http://www.ringringroad.com/square)

**Map 23**  
1963-5 Tamatsukuri-Ko,  
Namegata-shi  
9 AM to 6 PM  
[www.namegata-koiko.com](http://www.namegata-koiko.com)



11:00 AM

#### A showcase of locally produced ingredients



For lunch, head for **Kasumi Kitchen**, about 3 kilometers from the roadside station. In this charming restaurant, decorated with recycled supplies from a closed school, enjoy dishes that feature local ingredients such as lotus roots.



**Map 24**  
4784 Saka, Kasumigaura-shi  
11 AM to 3 PM; to 4 PM  
weekends and holidays  
Dinner served by reservation  
Fridays and Saturdays only  
Closed Mondays and Tuesdays  
(or the next day if Monday or Tuesday is a holiday)  
<http://kasumigaura.miraidukuri.jp/kitchen>



12:30 PM



#### Take a break at a roadside station



At **Roadside Station Tamatsukuri and Namegata City Tourist Product Center Ko-i-Koi**, find a range of locally-produced items, including seasonal produce and freshwater fish products. Try the exclusive **Namegata Burger**, with fried catfish or carp filets.



## More to See and Do

### Hoshino Resorts BEB5 Tsuchiura

Designed for cycling enthusiasts, the Cycle Rooms of **Hoshino Resorts BEB5 Tsuchiura**, which opened in the Ring-Ring Square Tsuchiura building, are the talk of the town. The walls are fitted with display racks, so you really can stay in the hotel with your bicycle.



Map 74  
**PLAYatré Tsuchiura 3F**,  
 1-30 Ariake-cho, Tsuchiura-shi  
 Check-in from 3 PM, check-out by 11 AM  
<https://hoshinoresorts.com/ja/hotels/beb5tsuchiura>



Tsukuba-Kasumigaura Ring-Ring Road was accredited as a National Cycle Route in 2019. It offers a variety of courses, from the shorter 25- or 40-kilometer courses to the full 180-kilometer route for experienced cyclists.  
[www.ringringroad.com](http://www.ringringroad.com)



## Tsuchiura-Kasumigaura

### ONE-DAY ROUTE PLAN





# A Day of Serenity by the Sea

## Hitachi-Kitaibaraki

### One-Day Route



#### Visit an ancient place of worship

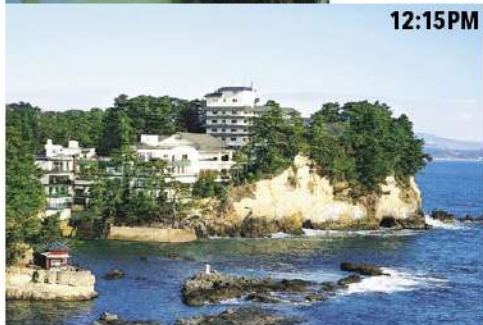
Features of **Otwa Jinja** shrine at the foot of Mt. Oiwa include the shrine building, Buddhist statues, and relics of religious festivals. It is known for its enduring tradition of ancient worship and syncretic Shinto and Buddhism practices.

**Map 24**  
752 Irishiken-cho, Hitachi-shi  
6 AM to 5 PM  
[www.oiwajinja.jp](http://www.oiwajinja.jp)



#### Tenshin's sanctum for contemplation

Okakura Tenshin, one of the most renowned art scholars of modern Japan, designed **Izura Rokkakudo** himself. In addition to the seascape that Tenshin treasured, take note of the pagoda's vermilion walls and its roof finial.



#### A hot spring to refresh body and mind

After your meal, bathe in the natural hot springs of **Itsuura Kanko Hotel Bekkan Talkanso**, with its stunning views of the Izura coast. The baths open to day visitors are perfect for a casual drop-in visit.

**Map 26**  
722 Otsu-cho, Kita-Ibaraki-shi  
Day visits 11 AM to 3 PM  
[www.izura.net](http://www.izura.net)



#### A café with spectacular views of the Pacific

**Sea Birds Cafe** is located in the station building designed under the supervision of Hitachi-native architect Kazuyo Sejima. With its all-glass walls, it feels like it is floating on the ocean. The café's signature dish is the soft and fluffy pancakes.





Map ㉔  
 1-3-20 Asahi-cho,  
 Hitachi-shi  
 7 AM to 10 PM  
<http://seabirdscafe.com>



Map ㉕  
 727-2 Izura, Otsu-cho, Kita-Ibaraki-shi  
 8:30 AM to 5:30 PM (may vary by season)  
 Closed Mondays (or Tuesdays if Monday is a holiday)  
<https://english.ibaraki-guide.jp/ranko-spot/rokkakudo>

## Oceanfront museum of nihonga paintings

The Tenshin Memorial Museum of Art, Ibaraki was founded near Rokka-ko to commemorate the achievements of Okakura Tenshin. Alongside Tenshin's relics and records, it exhibits modern and contemporary works of artists associated with Izura, among them Yokoyama Taikan, who studied under Tenshin.



Map ㉖ 2083 Tsubaki, Otsu-cho, Kita-Ibaraki-shi  
 9:30 AM to 5 PM; closed Mondays (or Tuesdays if Monday is a holiday) \*Closed temporarily until April 23, 2021  
[www.tenshin.museum.ibk.ed.jp](http://www.tenshin.museum.ibk.ed.jp)

Hitachi-Kitaibaraki

## ONE-DAY ROUTE PLAN





# Take Home IBARAKI

After discovering Ibaraki's nature, history, and food culture, take some of the prefecture's delicious specialty products home, along with the memories of your journey.

With its many hills and valleys and abundant waterways, Ibaraki is one of Japan's leading producers of sake. Its 40-plus breweries, the most in the Kanto region, uphold and pass down their respective sake-making traditions.



## Oarai's local sake from Tsukinoi Brewery

Tsukinoi Brewery's popular brands include its flagship Tsukinoi, Nanotsuki (far left), brewed with organic rice, and Hikoichi (left), named after the brewery's founder. Launched in 2014, Hikoichi is produced 100-percent locally, starting with the rice-growing (see p.14 for shop information).

## Ibaraki's beer, popular worldwide

Find your favorite from the original beers created by a Japanese sake brewery. Kiuchi Brewery's wide range of Hitachino Nest Beer varieties have unique flavors produced by varying the ingredients (malt, hops, and spices) and brewing processes (see p. 23).



## Ume plum wine from Meiri Shurui

Award-winning Hyakunen Umeshu is an exquisite drop, made by slowly aging unprocessed sake with Japan-grown ume plums, then finished with brandy and honey. The brewery's extensive line-up includes a cloudy variety (right bottle), for a more intensely fruity experience (see p. 22).



## Chestnut jam from Shimaki Farm

Shimaki Farm is popular for its raw chestnuts and processed products, including its chestnut jam. The chunky texture enhances the chestnut goodness. Choose from three varieties—Plain, Rum, and Eau de Vie, which has a rich brandy aroma (see p.12).



## Healthy treats by Daimaruya

Steamed and dried sweet potato (hoshi-imo) is the healthy, energy-giving specialty of Ibaraki. It's fun to taste and compare various types, the different varieties of sweet potato offering an array of flavors and textures, from dense and very sweet to light and soft (see p.14).

Front cover: The outermost torii gate, Kamiiso no Torii, of Oarai Isusaki Jinja ibrine (page 15)

Back cover, clockwise from top left: Shishimai lion dance of the autumn festival in Ibioka; melon parfait served in Ibaraki Sense (page 31); paragliding in Ibioka; Kasama pottery (pages 13 and 16)

Page 2: Hitachi Fudoki no Oka

1646 Someya, Ibioka; 9 AM to 5 PM (varies by area and season)

Closed Mondays (or Tuesdays if Monday is a holiday)

<http://business2.plala.or.jp/fudoki>

Photography: Tomobiko Yagishita (pages 12, 20–21, 22–23, and 30) and Hoshito Omita (pages 5, 14, 16–17, 22–23, 30–31, and back cover)

Translation: Simul International, Inc.

Maps: Takaichi Kamizumi Design: Seiko Kohjima ([rufus-design.com](http://rufus-design.com))

Editorial Supervision: Kateigabo International Editorial Department, Sekai Bunka Publishing Inc.

Planning: Kanto Asahi Advertising Inc.

Publisher: Ibaraki Prefectural Government International Tourism Division

The route times in this guidebook are approximate. Some facilities and shops may be closed during the year-end and New Year holidays (end of December to early January).

Due to the effects of the COVID-19 pandemic, days and hours of operation and customer service arrangements may change at some facilities and shops. Please check websites for information.

Amabie is a mythical beast thought to ward off epidemics in Japan.

Ibaraki Prefecture has adopted a registration-based e-mail notification system, with Amabie as its symbol, to prevent the spread of COVID-19 and is reinforcing efforts to establish a safe and secure destination for travelers. Facilities and shops displaying the "Amabie-chan" sticker show that they are implementing thorough infection-prevention measures.



# Meet the Senses of IBARAKI in Tokyo



With the shop décor arranged to evoke the prefecture's topography and producing regions, up to 1,000 products are on display at any time. Seasonal fruits, local sake, and other specialty products sit beside traditional crafts such as Kasama pottery, Yuki-tsumugi stoles and Suifu paper lanterns.

At Ibaraki Sense, the Ibaraki product shop that was renovated in the autumn of 2018, you can discover the prefecture's many charms in the heart of Ginza, Tokyo's leading shopping district.



Traditional craft items, evocative of Japan's history but modern enough to blend in with various styles, make perfect souvenirs. The range of processed meats, dairy products, seasonings, and other foods is unique to Ibaraki, one of Japan's leading agricultural regions.



The café offers the delights of seasonal fruit, such as melon parfait made with the prefecture's original melon variety, "Ibaraking". Takeout is also available at the café stand.



## ACCESS

*JR: 3 minutes' walk from Kyobashi Exit, Yurakucho Station*

*Tokyo Metro: 1 minute's walk from Ginza-Itchome Station, Yurakucho Line*

*4 minutes' walk from Kyobashi Station, Ginza Line*

*6 minutes' walk from Ginza Station, Hibiya / Marunouchi Lines*

*Konya Bldg. 1F, 1-2-1 Ginza, Chuo-ku, Tokyo*

*Shop and café: 11 AM to 7 PM*

*Dining: 11 AM to 2 PM; to 5 PM weekends and holidays*

*\*Hours as of October 2020 <https://ibaraki-sense.com>*



**Ibaraki Prefectural Tourism & Local  
Products Association**

*1-5-38 Sannomaru, Mito-shi, Ibaraki*  
Tel. 029-226-3800

**IBARAKI GUIDE**  
<https://english.ibarakiguide.jp>



**Facebook**  
[www.facebook.com/ibarakisightseeing](https://www.facebook.com/ibarakisightseeing)

**Instagram**  
[www.instagram.com/ibaraki.official](https://www.instagram.com/ibaraki.official)

